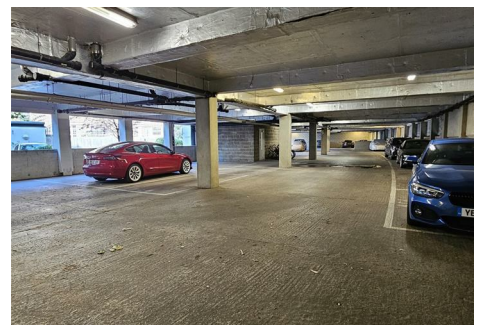
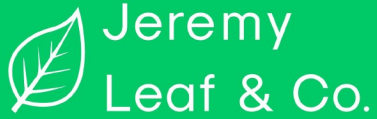


est 1979



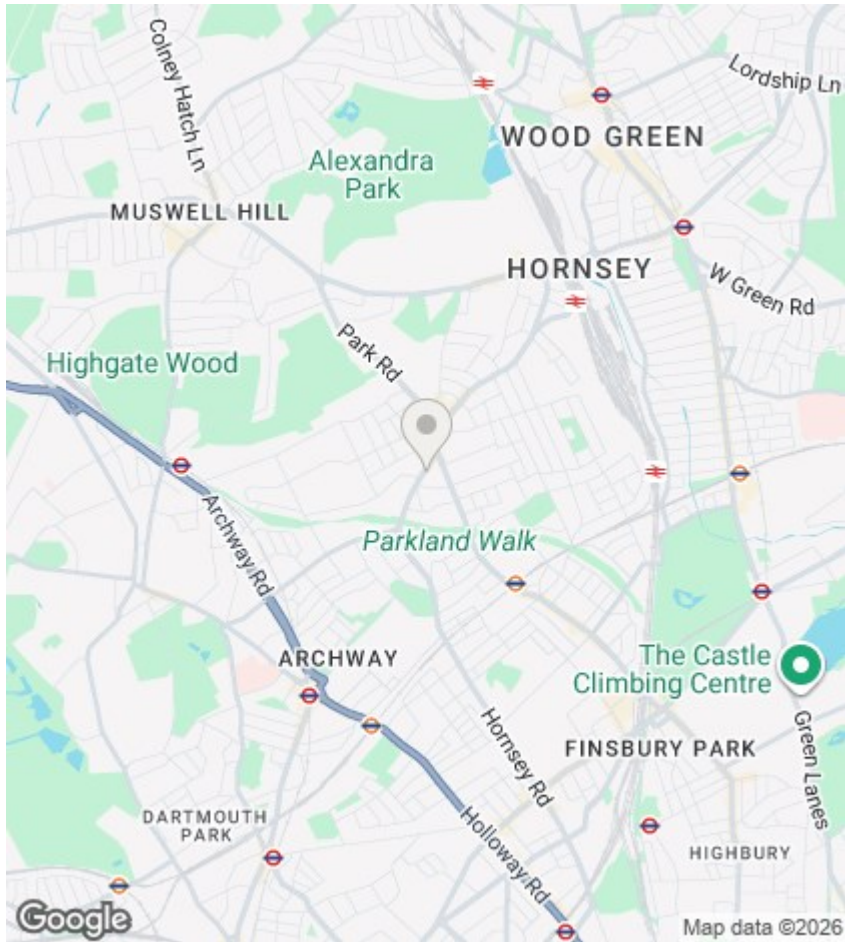
Crouch End Hill, London, N8 8DF

£2,150 Per Month

- Two Double Bedrooms
- Wooden Flooring
- Modern Apartment
- Open Plan
- Ample Storage
- Underground Allocated Parking
- Bathroom With Separate Shower Cubicle
- Lift Access
- 625 Sq ft

98 High Road, London, N2 9EB
020 8444 5222

eastfinchley@jeremyleaf.co.uk
<https://www.jeremyleaf.co.uk/>



Directions

Viewings

Viewings by arrangement only. Call 020 8444 5222 to make an appointment.

Council Tax Band:

E

EPC Rating:

D

